



ROVER DUAL LENS WIDE VIEW  
CAMERA 2\*1080P, 4MM, H.265AI  
(40M IR DISTANCE, AI HUMAN  
DETECTION, WI-FI, DC 12V, IP66)



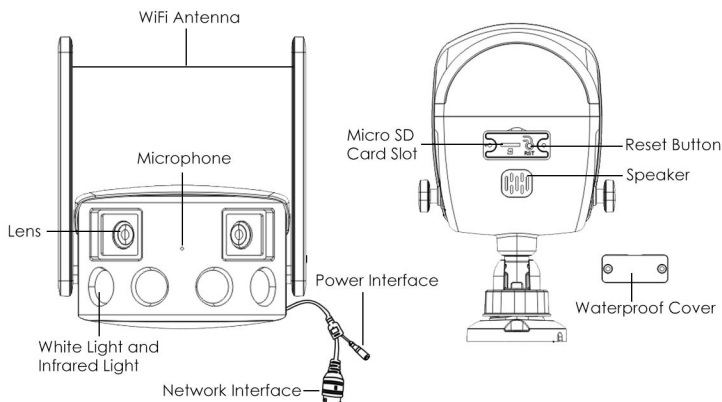
# RHFE1B4X1



## FEATURES

- 2\*1080P 1/2.8" High Performance CMOS sensor;
- HD resolution, clear image;
- Binocular stitching integrates 170° super wide angle view to capture more details;
- Supports binocular picture in picture display;
- Supports human shape and intelligence (line mixing, area care, etc.);
- Supports electronic PTZ and human shape detection technology to automatically capture human shape track, realize tracking and capturing, and clearly control every detail;
- Dual light warning, full-color day and night, infrared night vision and other modes can be switched at will;
- Supports two-way voice intercom;
- External storage SD card slot, which can support up to 128GB;
- Supports wired or wireless connection;
- Conforms to IP66 waterproof design;
- Supports digital wide dynamic, 3D noise reduction function;
- Supports mobile phone remote monitoring (IOS, Android);

## INTERFACE



## SPECIFICATIONS

MODEL	RHFE1B4X1
<b>CAMERA</b>	
Image Sensor	2*1080P 1/2.8" High Performance CMOS sensor
Minimum Illumination	Color: 0.01Lux @(F1.2,AGC ON); 0 Lux with IR B/W: 0.001 Lux @(F1.2,AGC ON),0 Lux with IR
Shutter Speed	1/50(1/60)s to 1/10,000 s
Lens Size	HD professional lens 4mm@ F1.6
Lens Interface Type	M12
Day & Night	Supports IR-Cut
<b>ENCODING FORMAT</b>	
Video Compression	H.265AI/H.265+ High Profile, JPEG Capture
Bit Rate	0.1Mbps~8Mbps
Audio Compression	G.711a
<b>IMAGE</b>	
Resolution	4M(3840*1080)
Frame Rate	4M(3840*1080)@12fps
<b>NETWORK</b>	
Connection Type	Wired/Wireless/AP mode
<b>OTHERS</b>	
Temperature	-10°C~60°C
Humidity	less than 90% (non-condensing)
Power Supply	DC12V±10%
IR Range	30-40 meters
Power Consumption	5W MAX
Weight	About 374g
Dimensions	124mm*72mm*201mm

Disclaimer: Design & specifications are subject to change without prior notice.

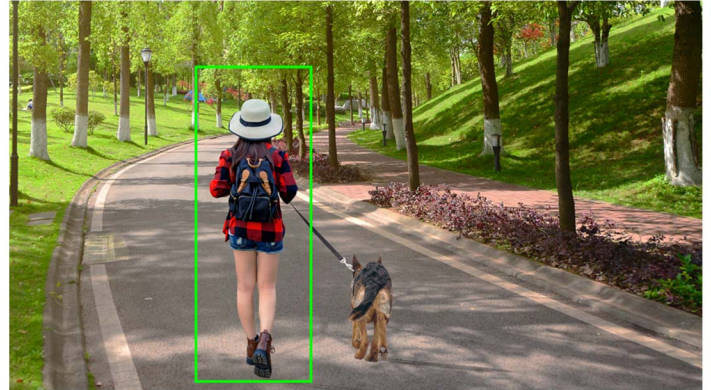
## WIDE VIEW

170° splicing image, one-shot of Full View, the aspect ratio is close to 32:9 One camera serves as two cameras.



## HUMAN TRACKING

Electronic PTZ achieve Human Tracking It supports electronic PTZ and human detection to automatically capture human trace, realize tracking and capturing, and clearly control every detail.



## SPLICING

Self developed fusion splicing technology is adopted to integrate the two images naturally.



## TWO WAY TALK

Built-in Mic and Speaker can talk with the phone whenever and wherever possible.

