



2.0MP (1080P) 1/3" DUAL LIGHT BULLET XVI CAMERA, 2.8MM, 1 LED ARRAY, 1 SPOTLIGHT (30 METERS IR RANGE, WHITE, 12VDC, NTSC) (SUPPORTS TWO-WAY COAXIAL AUDIO)



RXB913GHDC



SPECIFICATIONS

MODEL	RXB913GHDC
CAMERA	
Image Sensor	2.0MP 1/3" low illumination CMOS sensor
Signal	XVI/AHD/TVI/CVI:1080P@25fps
Minimum Illumination	Color: 0.01 Lux @ (F1.2, AGC ON); 0 Lux with IR B/W: 0.001 Lux @ (F1.2, AGC ON), 0 Lux with IR
Shutter Time	1/50(1/60)s to 1/10,000 s
Lens Size	HD lens 2.8mm
Lens Mount	M12
Day & Night	IR cut filter with auto switch
Maximum Image Resolution	1920*1080
IR Range	1 array lamp, 1 white light "IR2": 20-30 meters
INTERFACE	
Video Input	1Vp-p Composite Output (75Ω/BNC)
Audio I/O	1/1, Supports two-way coaxial audio
GENERAL	
Operating Temperature	-10°C+60°C
Humidity	10%-90% RH
Power Supply	DC12V±10%
Power Consumption	MAX 3W
Material	ABS+PC
Ingress Protection	IP66
Weight	Around 170g
Dimensions	68mm*72mm*134mm

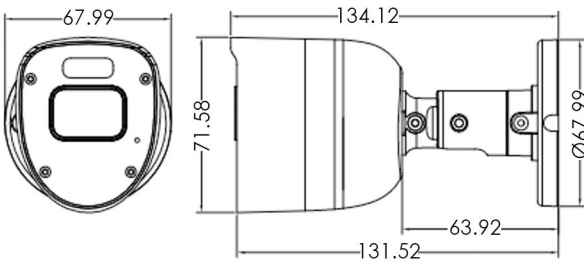
Disclaimer: Design & specifications are subject to change without prior notice.

RXB913GHDC is an outdoor waterproof bullet camera with high definition image quality, suitable for places with low or no light conditions, such as roads, warehouses, underground parking lots, bars, pipelines, parks, etc.

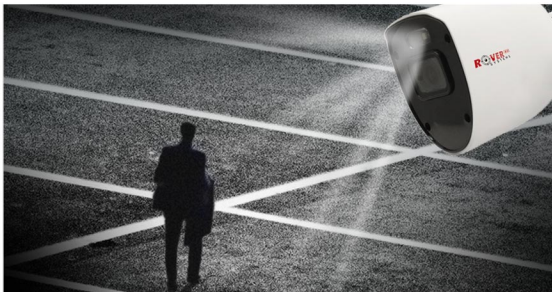
FEATURES

- Intelligent Switching, Supports white light and infrared for the dual light feature;
- 2.0MP 1/3" low illumination CMOS sensor;
- HD lens 2.8mm;
- Day/Night (Auto ICR);
- Auto Electronic Shutter;
- IR range: 1 array lamp, 1 white light, 20m-30m;
- Ingress Protection: IP66;
- Supports XVI, AHD, TVI, CVI, CVBS;
- Standard Coaxial Control;
- Supports Coaxial Upgrade;
- Supports Two-way Coaxial Audio;
- Can be used with XVI DVRs that support AI functions (i.e. Human Detection, Face Detection, Face Search, and Vehicle Detection);

DIMENSIONS



WHITE LIGHT



White Light turns on when a human body is detected on the DVR.

